

VISIOPROBE

Innovation in
**remote
visual inspection**

COMPACT CAMERAS
FOR INDUSTRIAL
ENDOSCOPY



www.visioprobe.com

A complete range designed to meet your needs

3 COMPACT CAMERAS FOR ALL VOLUMES AND TYPES OF VISUAL INSPECTION APPLICATIONS

Modularity



Robustness

- Aluminium or stainless steel for highly contaminated environments, shockproof design, sapphire window
- Waterproof
- Compact and ergonomic case



Pan & Tilt, easy handling, waterproof and rugged, Visioprobe cameras stand the test of time.

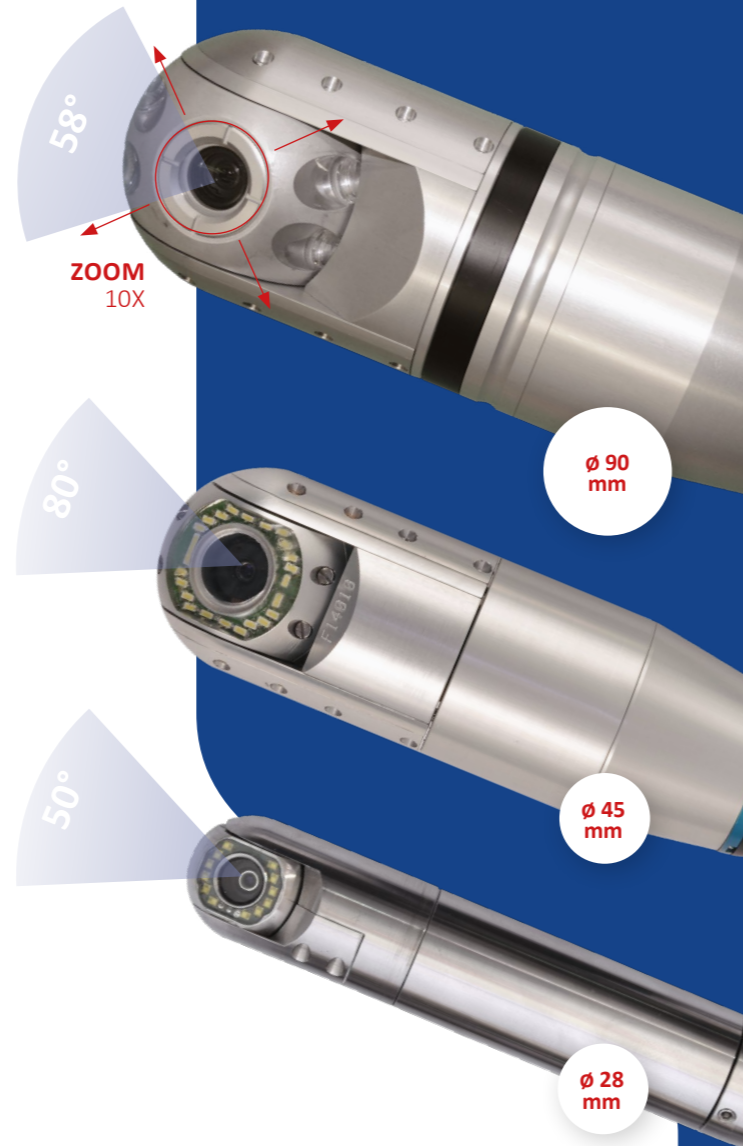
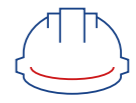


Image quality

- 10x zoom or manual focus from 5mm to infinity, providing a razor-sharp image from near to far
- Adjustable high power LED lighting: allows to adjust to the environment while avoiding the effects of reflections or overexposure
- Real-time estimate of tip to target distance for cameras with manual focus

A global and turnkey solution to fit your environment



15 YEARS OF FIELD EXPERIENCE



CONTROL UNIT ULTRA LIGHT AND EASY

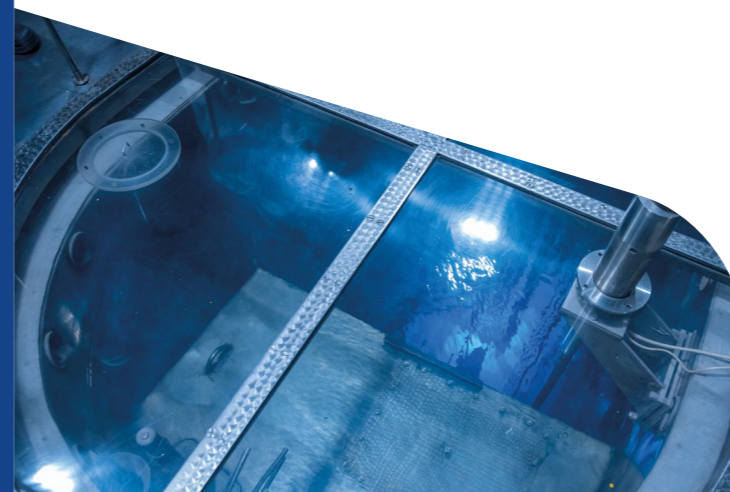
- Ergonomic control interface allowing easy management of photos/videos and generation of personalized inspection reports in a few clicks
- Intuitive power variation joystick offering precise control of cameras
- Change of camera head without rebooting the system
- Interchangeables batteries with 4h of autonomy
- Video output and USB port for data sharing and collaborative work
- Scalable solution designed to accommodate future camera developments

CUSTOMIZABLE PRODUCTS

- Stainless steel camera for contaminated environments
- Push rod with Teflon
- LED lighting per quarter

ACCESSORIES TO BRING YOU COMFORT & MOBILITY

- Telescopic poles for short distance straight inspections
- Push rods for long distance inspections with bends
- Flexible cable for vertical inspections
- On demand centering devices to inspect all your tubes with perfect image stability
- Multi-support clamps and arms
- Compact cases and suitcases



VISIOPROBE

 **15**
COUNTRIES
DISTRIBUTED



The new standard in industrial endoscopy cameras

A complete solution including cameras, control unit and mobility accessories, Visioprobe products are **robust, easy to handle and interchangeable**. Available in a variety of sizes to fit any application; Visioprobe cameras are among the most compact and rugged while offering unique image quality and features.

BEYOND THE PRODUCT, WE GUARANTEE PEACE OF MIND OF OUR CLIENTS



Image quality



Robustness



Modularity

/// Investing in R&D

Visioprobe is the result of innovative, patent-protected **R&D** based on years of experience serving our industrial customers.

> 3 active patents on Visioprobe range

/// Providing high quality of service

Warranty extension, preventive maintenance, repair rebate program, back-up equipment... our teams provide you with a quality service to guarantee a long-lasting and effective solution.

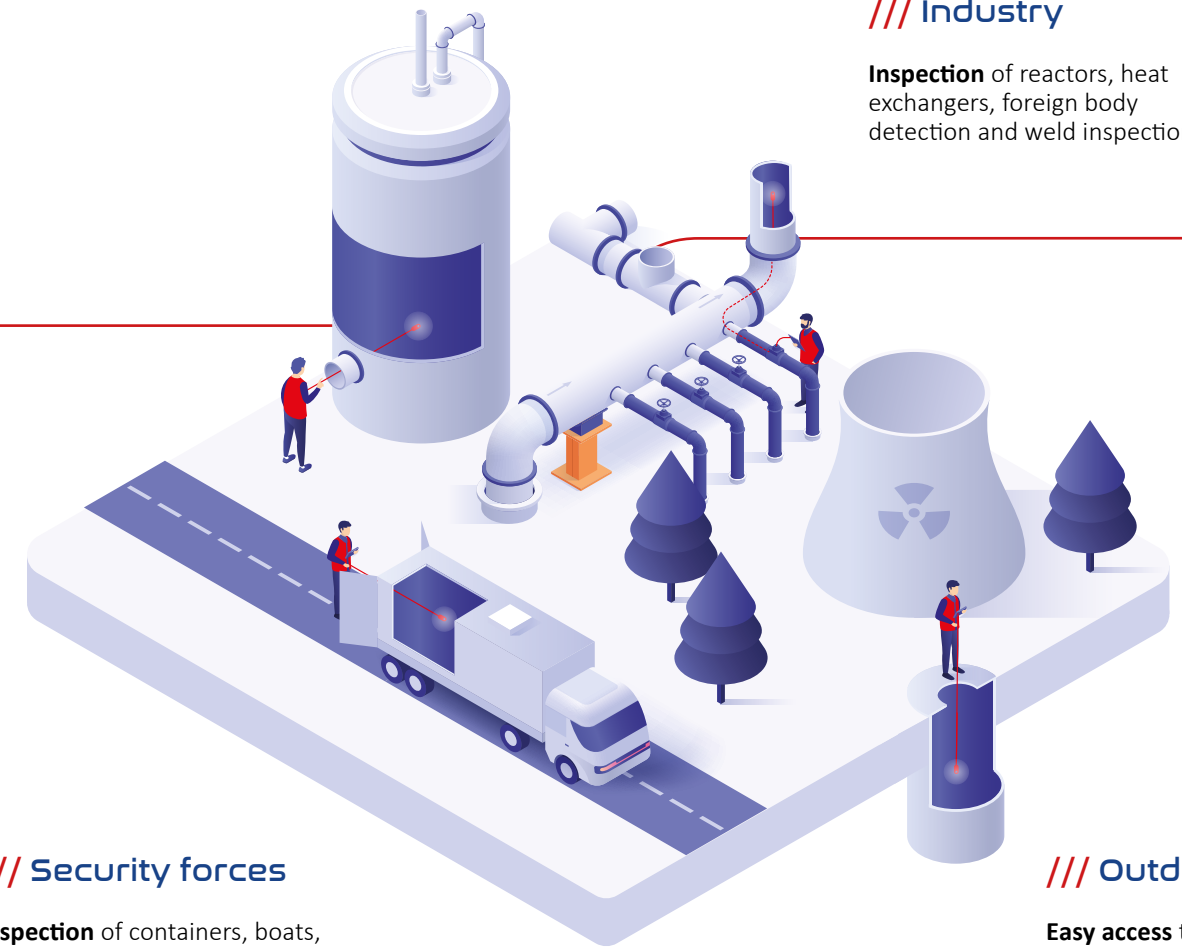
/// Consulting and support

Our teams, entirely dedicated for visual inspection, bring their expertise at your service to meet all your needs.

Unlimited application potential

/// Industry

Inspection of reactors, heat exchangers, foreign body detection and weld inspection.



/// Security forces

Inspection of containers, boats, trucks, vehicles, ceilings, caches, cavities.

/// Outdoor

Easy access to engineering structures, boreholes or manholes.



Developed and manufactured by:

Distributed by:



A global presence through a large distribution network



30, rue des Grands Chênes
42 600 MONTBRISON - FRANCE

foretec@foretec.fr

Tél. +33 (0) 4 77 96 89 30

www.foretec.fr