

Shadow System

Super Compact DR System

The First Smartphone Operated DR System in the World!



Why NOVO?

The most experienced team, In-House Research and Development, innovative technology, superb raw materials, we offer the best in every class:



Image Quality



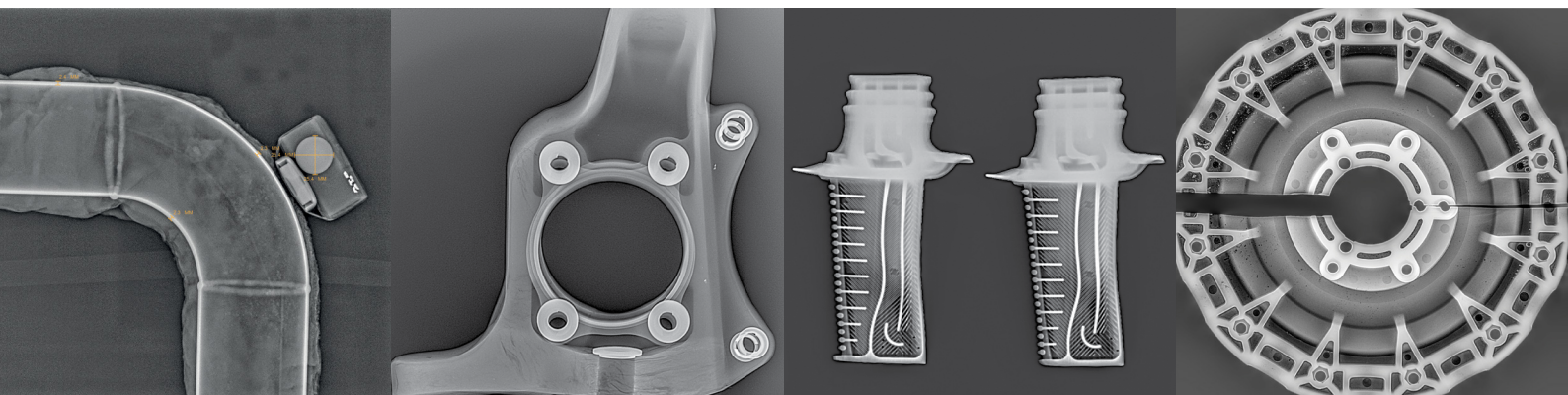
Reliability



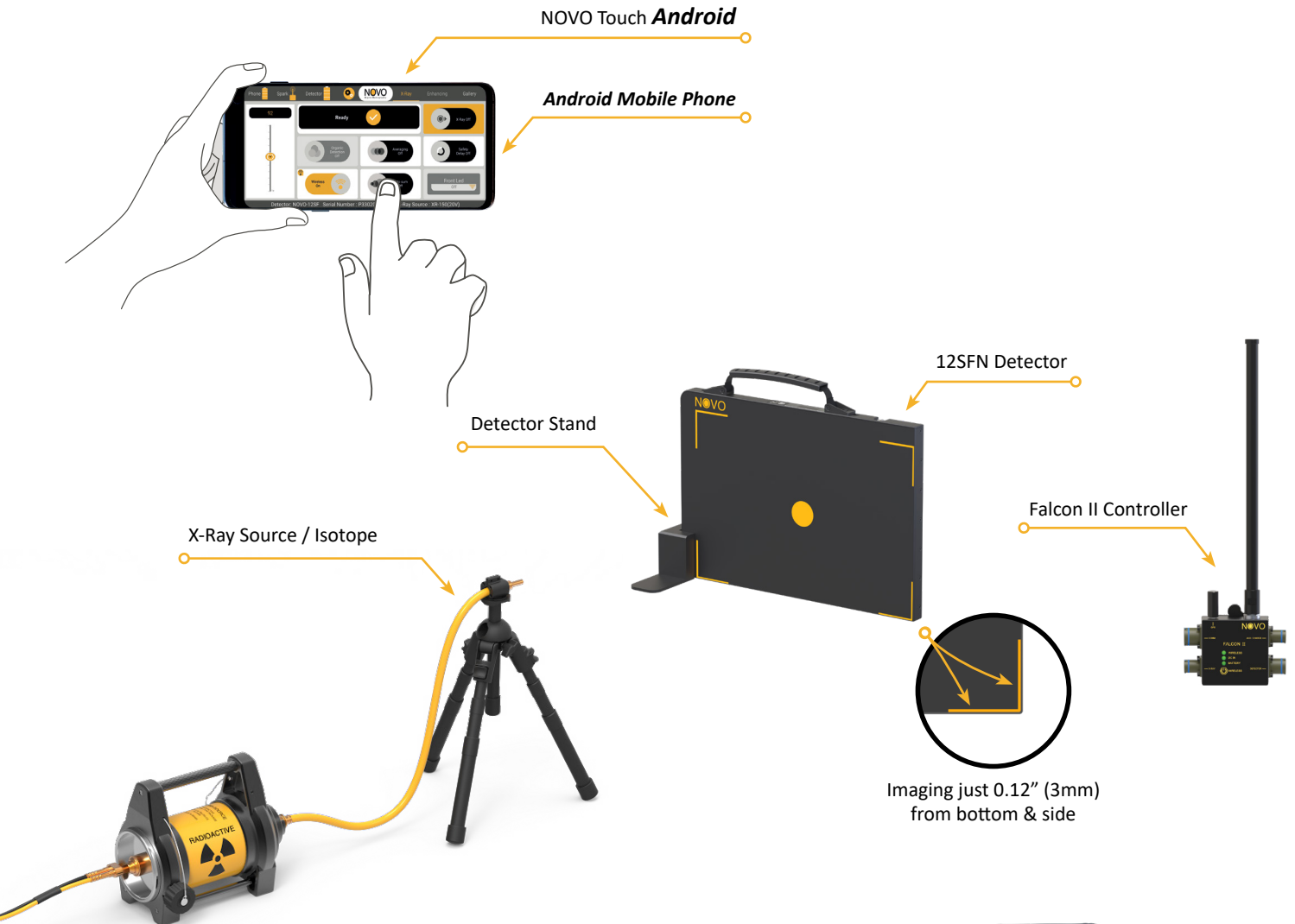
Ease of Use



Professional Support



Shadow System



- *Super compact system*
- *Detector weighs only 2.6 lbs. (1.2kg)*
- *Bezel only 0.12" (3mm) from bottom & side*
- *Android Phone / Windows tablet operation*
- *Wired & Wireless operation modes*
- *Automatic Exposure Detection (AED)*

System Backpack



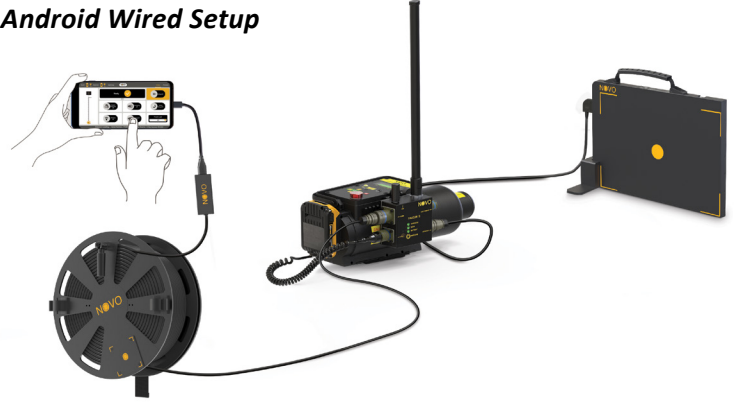
System Operation Modes

Android / Windows - Wireless & Wired Operation

Android Wireless Setup



Android Wired Setup



Windows Wireless Setup



Windows Wired Setup



Optional

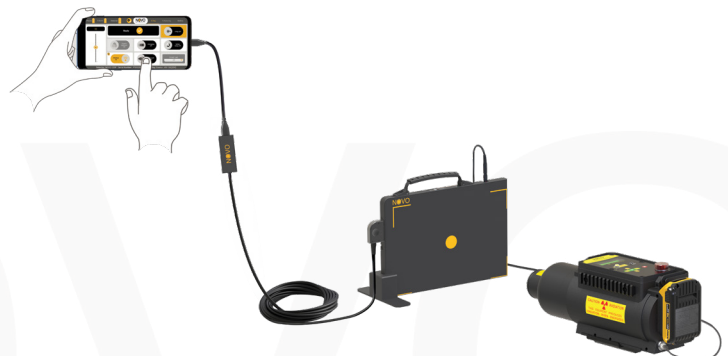
Automatic Exposure Detection (AED)

- No Mobile Phone / Tablet, no cables - take only Detector & Source to the job site!
- On-board internal memory enables saving up to 100 images without deleting older ones



Direct Wired Setup

- Wired Setup



* Can be swapped with a Windows Tablet

Components

Detector

- Lightest in the Market
- Highest Durability
- LCD Display

Detector Model	NOVO 12SFN
Bezel	0.12" (3mm) from bottom & side
Detector Weight (including battery)	2.6 lbs. (1.2kg)
Detector Load Proof	440 lbs. (200kg)
Detector Imaging Area	6.75" x 10.1" (17.2cm x 25.8cm)
Detector Size	7.7" x 11.1" (19.5cm x 28.2cm)
Detector Drop Test	31.5" (80cm)
Detector Thickness	0.6" (15mm)
Bit Depth	16 bit latest generation
Connector	Magnetic Dual Direction Connector
Life Span	Over 100K rem*



* Over 100K rem of direct exposure on the detector

Controller

Falcon II

- Full control of CP Sources
- MIL-DTL 38999 connectors
- 2 lbs. (900 grams)
- Unlimited operation with AC (POE)
- 6+ hours Built-in Battery
- Wired / Semi Wired / Wireless modes
- Wireless Up to 500m Line of Sight
- Controls All Golden Sources
- Quick connection to Golden Sources
- Weatherproof design
- LED Indications
- Supports Parallel Multi Location Control & Display



Components

Tablets / Smartphones



Samsung S21

Panasonic Toughpad™ FZ-G2

	Samsung S21	Panasonic Toughpad™ FZ-G2
Screen Size	6.2"	10.1"
Screen Resolution	2400 x 1080	1920 x 1200
Screen Brightness (NIT)	850	1,000
Touch Screen	✓	✓
Operating System	Android	Windows 10
MIL-STD-810G	✗	✓
IP Rating	IP68	IP65
Battery Operation Time at 800 NIT	10+ hours	5+ hours

*Additional tablets and laptops supported

X-Ray Sources

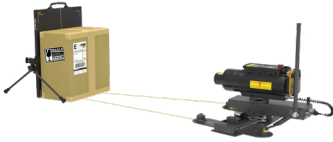


	Litex	XR150	XR200	XRS-3	XRS-4
KVP	120	150	150	270	370
Weight	5.6 lbs. (2.5kg)	5.9 lbs. (2.7 kg)	10.7 lbs. (4.8 kg)	11.8 lbs. (5.3 kg)	18.3 lbs. (8.3 kg)
Size	11.7" x 3.2" x 4.7" (29.9cm x 8.2cm x 12cm)	10.4" x 3.5" x 4.7" (26.6cm x 9cm x 12.1cm)	10.7" x 4.3" x 5.8" (27.2cm x 10.8cm x 14.8cm)	14.2" x 4.3" x 5.8" (36.1cm x 10.9cm x 14.8cm)	19.3" x 4.8" x 7.1" (48.9cm x 12.2cm x 17.9cm)

Accessories

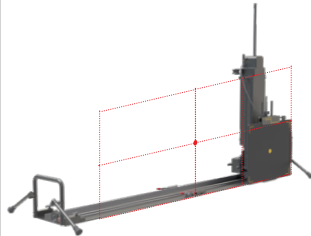
3D ARC

3D Imaging with exact X, Y, Z measurements



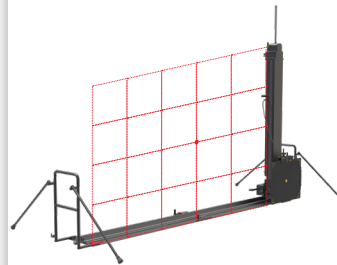
Folding Slider L

Ideal for screening large objects



Folding Slider XXL

Super sized, ideal for screening XXL objects



Eagle

Extremely long range wireless transceiver up to 2 miles (3.3km) LOS



Extension Cables

Available at 50m, 100m and 150m for a total of 300m



Armor

Super rugged Detector protection with multiple mounting options



Soft Protective Cover

Lightweight impact, heat and liquid protection



Tripod Mount

Firmly holds the Detector and provides various positioning options



Lookout

Organic detection, live Video & Audio



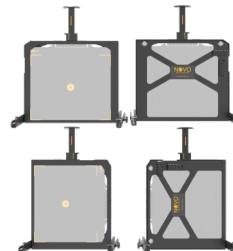
Wireless X-ray

Enables control of X-Ray sources without an X-Ray sync cable



C-Arm Frame

Detector adapter for C-Arm, Manipulators and Mechanical Systems



Wireless Super Ranger

Increases wireless distance and stability

