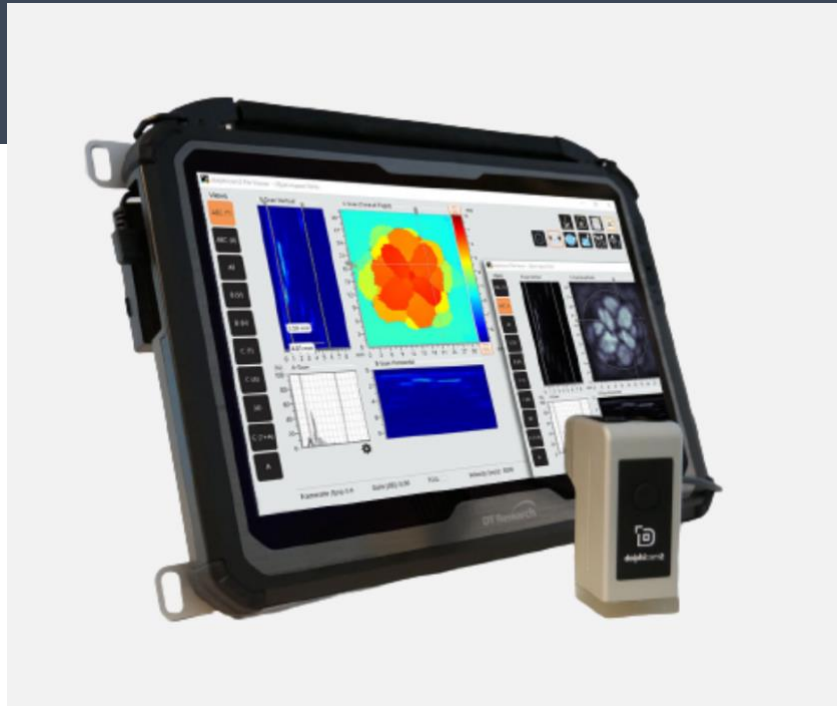


DOLPHICAM2+ PRODUCT SPECIFICATION



The dolphicam2+ is capable of high-resolution imaging and precise measurements for a wide range of material types including composites, metals and multi materials.

With a straightforward, quick to deploy, user-friendly system, technicians of all experience levels can generate analysis-ready images of materials in real time for quick decision making.

BLACK BOX & TOUGHPAD

The dolphicam2+ consists of a rugged 14" DT340T tablet with a combined table stand and Black Box mounting bracket on its rear.

A kick stand allows you to prop your device at almost any angle that's convenient for you.

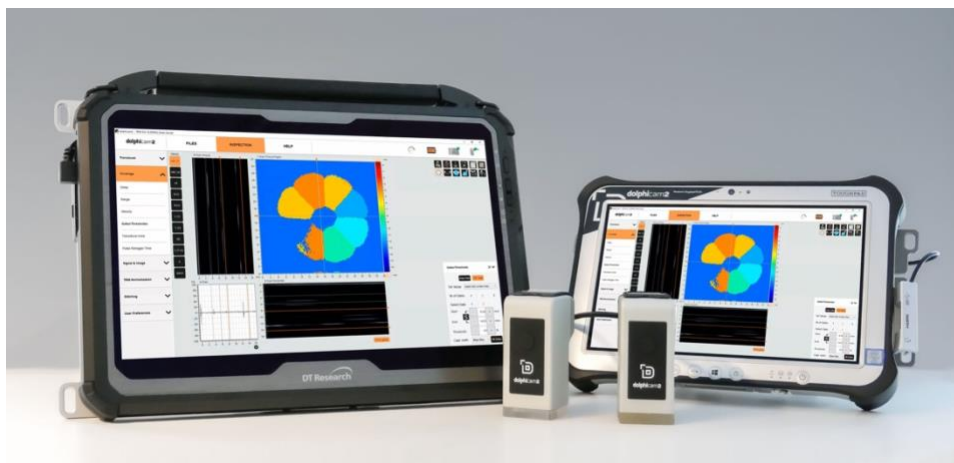


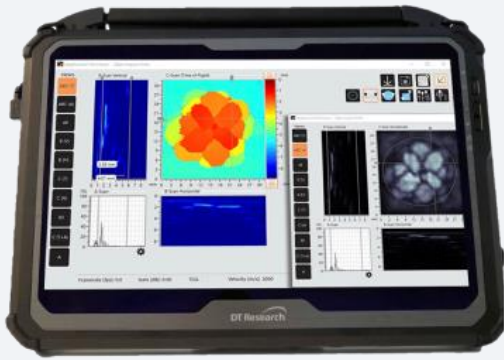
FEATURES

- Anti-glare screen ✓
- Can connect to external PC ✓
- Audio buzzer ✓
- Bluetooth ✓
- Wi-Fi ✓
- Camera ✓

The Toughpad has a daylight-readable display with gloved-multitouch and waterproof digitizer pen.

The 40% larger screen size than the dolphicam2, makes it ideally suited in cases where minimising weight is not a key driver, for instance during manufacturing.





SIZE AND WEIGHT

Weight	2.9kg
Size (including integrated neck strap)	300 x 188 x 70 mm
Size (Black Box)	200 x 130 x 32 mm
Size (Toughpad)	376 x 244 x 29 mm

TECHNICAL DETAILS

Transducer ports	2x USB C
Other connections	Ethernet
Battery	10-12 hours
Ingress protection	IP65
PC/Host port	USB C

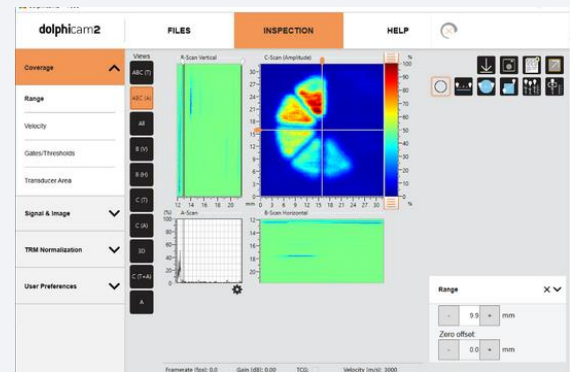
The Black Box itself is the heart of the system, driving the TRM while connecting to the Toughpad which runs and displays the software

The IP65 sealing gives the device full protection against dust, and also protects against low pressure water jets from all directions.

The Toughpad is equipped with an Intel® Core™ i7-8550U, Quad-Core, 1.8GHz, 8GB of RAM and a 256GB SSD.

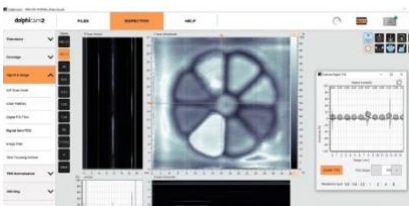
Software

The dolphicam2+ software is unique among NDT packages, designed from the ground up to complement the imaging capabilities of the platform. Ultrasonic images are shown not just using conventional signal amplitudes, but also as time of flight, opening up a world of instant, color-coded thickness mapping. This is helped further by the live 3D characterization view, which instantly enhance visualization and can be readily interpreted by different levels of end-users.



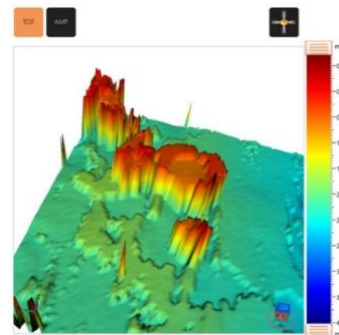
FEATURES

- 1 Axis & 2 Axis Encoded Mapping ✓
- Grid and free hand stitching ✓
- Configuration setting files ✓
- Full Matrix Capture (FMC) ✓
- Total Focusing Method (TFM) ✓
- TCG Functionality ✓
- Digital Time Corrected Gain (TCG) ✓
- Report configuration ✓



OTHER GENERAL FUNCTIONALITY

- Color focus
- Reset settings to default
- Save screenshot
- Remote TRM activation
- Expanded view (hide config menu)
- Comfortable handle for portability



VIEWS

- A-scan
- B-scan (vertical/horizontal, TFM)
- C-scan (Amplitude, ToF)
- 3D (ToF & Amp)
- Stitch view

MEASUREMENTS

- Depth B-scan
- Line in C-scan
- Depth & Amplitude in C-scan
- Rectangle (Width, Height, Area)
- Circle (Diameter, Circumference Area)



WANT TO LEARN MORE ABOUT WHAT YOU CAN DO WITH THE DOLPHICAM2+

Contact us to arrange a 10-minute demonstration with one of our expert consultants to understand how you can utilize dolphicam2+.

[Get in touch](#)

Dolphitech AS
Studievegen 16
2815 Gjøvik
Norway

 Made in Norway



dolphitech.com
sales@dolphitech.com