

Rausch mobile

Efficient inspection

FullHD
1920 x 1080



RAUSCHTV.COM

rausch


Compact Flexible Mobile



Application range 100 – 3000 mm

The Rausch-Tab is the new control unit for Cubix 300 and Omicon and the mobile solution for main lines and lateral inspection in full-HD.



+ Ex-protection option 

→ Rausch-Tab

- 12.1" touch screen display
- Integrated PC
- Operating system: Windows 10
- Multifunctional joysticks
- Easy to remove for office work
- Standard basic software PipeCommander for image, video and PDF creation
- Expandable with fully integrated inspection software PipeCommander or any other third-party-system

- Bracket for mounting on the cable drum Cubix 300 or vehicle installations
- Wi-Fi capable, LAN capable, USB, HDMI
- Determining the diameter
- Inclination, temperature and laser measurements with internal PC
- Deformation measurement across the entire reach
- Dimension: 410 x 250 mm
- Type of protection: IP 64

→ Cubix 300

Electric cable drum with up to 300 m camera cable

- Control panel with status display
- Membrane keys for back area operation
- Integrated carrying handles
- Electrical brake function
- Manual brake
- Unwind aid with cross guide spindle and folding arm for optimum cable routing
- Radio remote control (optional)
- 100 – 250 V AC (50/60 Hz), max. 600 W
- Dimension: 425 x 425 x 480 mm
- Weight: 67 kg inc. 300 m cable



→ Vehicle upgrade



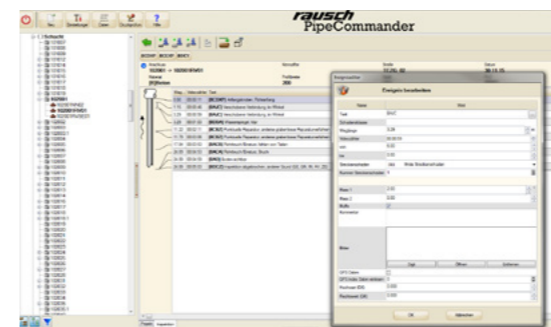
Studio

- Rausch-Tab
- LED lighting
- Charging over the standard alternator
- Power supply with lithium-ion batteries

Rear area

- Finishing with high-quality aluminum profiles and pull-outs for crawlers and accessories
- Rear monitor
- Folding rain and sun protection canopy
- Swivel arm with winch and LED worklight
- Water tank for cleaning work
- Cable drum Cubix 300
- 300 m camera cable
- Deflection pulley

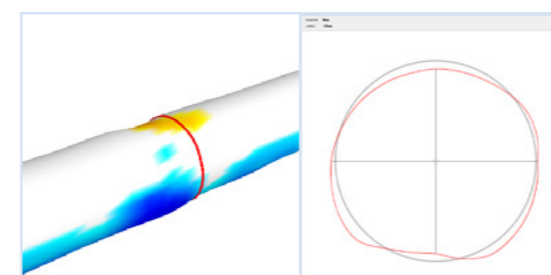
→ Software



PipeCommander

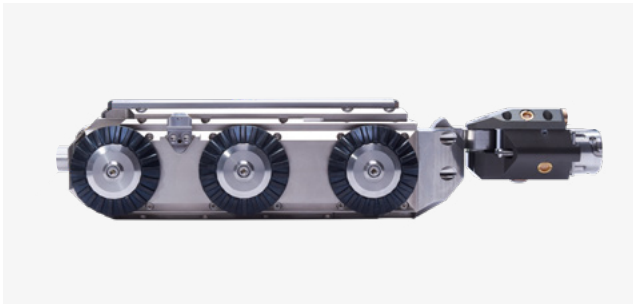
With PipeCommander all relevant master data and inspection results are recorded and can be easily edited later. All projects are managed in a clear menu structure and can be exported at any time. Inspection results can be retrieved in the form of videos, photos, logs and statistics.

→ Deformation measurement



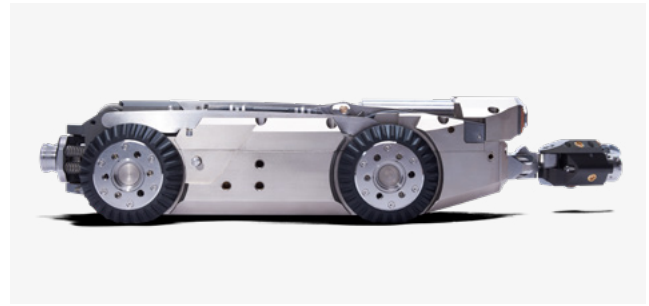
Our main-sewer inspection cameras have other talents, too: Equipped with an optionally available scanning function, they detect even the smallest deformations in main lines using 2-point precision lasers and measure them precisely – both point by point and across the entire reach. Due to the 3D display of the pipe, deformations can be determined perfectly.

Crawler



Crawler C 90

- 100 – 600 mm
- 3 drive axles
- Manual and automatic steering function
- Continuously adjustable automatic reversing mechanism
- 30° bends from 150 mm
- Camera quick connect
- Mechanical camera high adjustment
- Electric lifting gear
- Rear view camera
- Tilt sensor
- Temperature measurement



Crawler C 135

- 135 – 1600 mm
- Crawler extension (Lafette) for up to 3000 mm
- Manual and automatic steering function
- Continuously adjustable automatic reversing mechanism
- Camera quick connect
- Electric lifting gear
- Rear view camera
- Tilt sensor
- Permanent pressure monitor
- Temperature measurement

Cameras



Camera KS 40

- From 75 mm
- Resolution: over 420 TV lines
- 90° bends from 90 mm
- Attachable pin
- 33 kHz and 512 Hz locating
- Robust lens module without moving parts = Liquid lens
- 2 laser diodes for precise measurement
- Manual and automatic focus
- Integrated 3D sensor



Camera KS 60 SD / HD

- From 100 mm
- Pan and tilt head camera
- Resolution SD: over 530 TV lines
- Resolution HD: 1920 x 1080 px
- Manual and automatic focus
- 2 laser diodes for precise measurement
- Multiple zoom
- 33 kHz and 512 Hz locating
- Integrated 3D sensor



Camera KS 135 SD / HD

- From 135 mm
- Pan and tilt head camera
- Resolution SD: over 530 TV lines
- Resolution HD: 1920 x 1080 px
- 2 laser diodes for precise measurement
- 10x optical and 12x digital zoom
- Wireless additional lighting
- Variable circling speed from 2–75 rpm
- Lens with auto aperture, auto focus and manual focus